

MODU-CASE™



TRITON CASE CARTS™



23201 Antonio Parkway Rancho Santa Margarita, CA 92688
INVENTORY MANAGEMENT SYSTEMS. BUILDING STORAGE AROUND YOUR SUPPLY CHAIN.

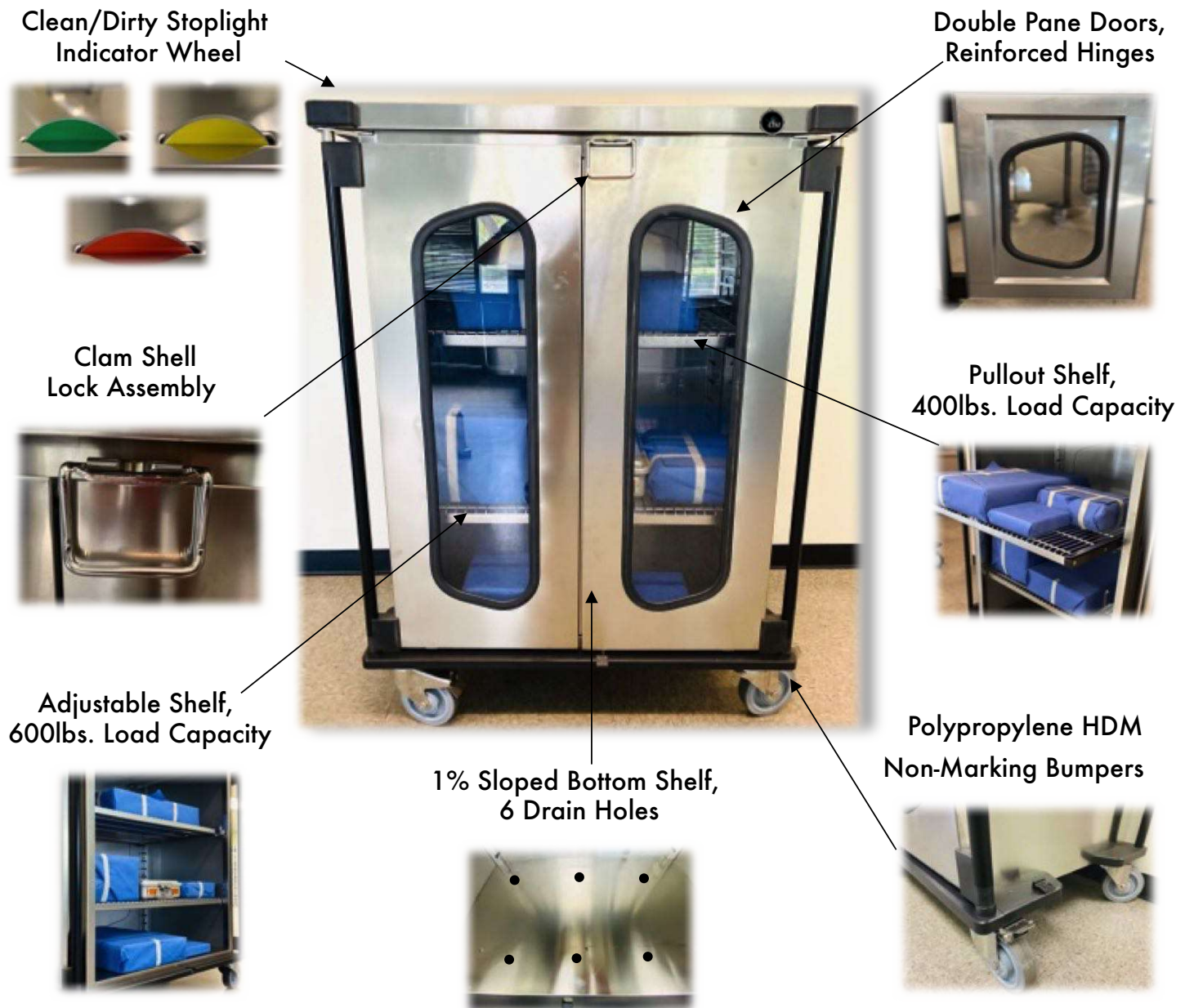


TRITON CASE CARTS™



DSI's line of TRITON CASE CARTS™ are built for transformation. Our modular storage system within the cart interior helps you custom configure the shelves based on the width and height of the surgical instruments stored in both blue wraps and rigid containers. Our carts are a perfect fit for the NO-TEAR™ storage system within your CS/SPD.

Product Specifications



Two Cart Heights | Four Custom Configured Shelf Interiors | No Tools Required for Adjustment

800.393.6090 | www.dsidirect.com | www.no-tear.com

23201 Antonio Parkway Rancho Santa Margarita, CA 92688



TRITON CASE CARTS™



Product Specifications Continued

Temperature Reducing Handle



Department Indicator



Extra Clear Plexiglass Windows, Rubber Seal



Modular Shelving Framework



High Temp Washable Stainless Casters up to 275 F



1 Directional, 2 Brake, 1 Swivel Caster Set



Preconfigured Kits	Product Specifications and Descriptions
D1-TRITON-STD/STD D1-TRITON-STD/CTSOS D1-TRITON-STD/HYBD D1-TRITON-STD/CTS	Standard 39.25"H, Standard Interior, 1 Pullout Shelf, Color Wheel Standard 39.25"H, CTS/OS Interior, 1 Frame, 8 Runner Sets, Color Wheel Standard 39.25"H, Hybrid Interior, 2 Frames, 8 Runner Sets, Color Wheel Standard 39.25"H, CTS Interior, 3 Frames, 8 Runner Sets, Color Wheel
D1-TRITON-TALL/STD D1-TRITON-TALL/CTSOS D1-TRITON-TALL/HYBD D1-TRITON-TALL/CTS	Tall 59.25"H, Standard Interior, 2 Pullout Shelves, Color Wheel Tall 59.25"H, CTS/OS Interior, 1 Frame, 16 Runner Sets, Color Wheel Tall 59.25"H, Hybrid Interior, 2 Frames, 16 Runner Sets, Color Wheel Tall 59.25"H, CTS Interior, 3 Frames, 16 Runner Sets, Color Wheel

Individual stainless steel wire shelves and baskets for CTS, Hybrid, and OS are not included in the kits

Two Cart Heights | Four Custom Configured Shelf Interiors | No Tools Required for Adjustment

800.393.6090 | www.dsidirect.com | www.no-tear.com

23201 Antonio Parkway Rancho Santa Margarita, CA 92688



TRITON CASE CARTS™

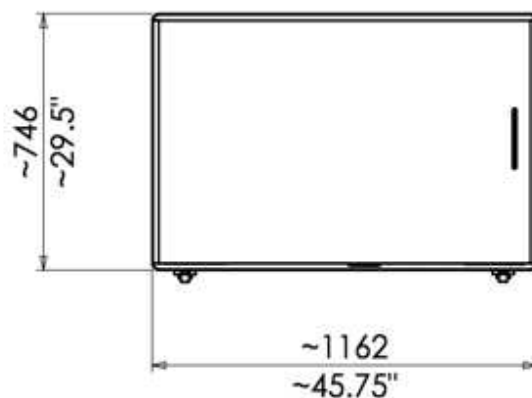


Product Heights – Standard 39.25"H or Tall 59.25"H

Standard



Total Exterior Dimensions
39.25"H x 45.75"W x 29.5"D

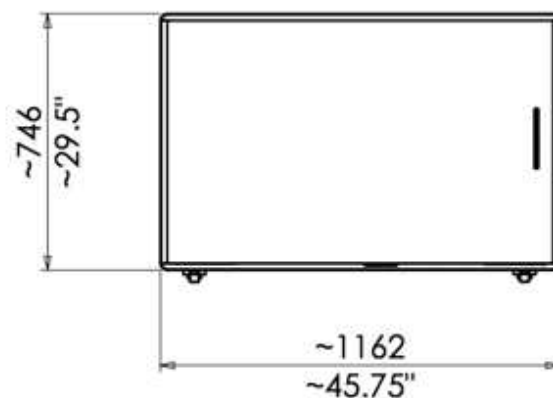


Usable Interior Dimensions
25.25"H x 33.5"W x 24.5"D

Tall



Total Exterior Dimensions
59.25"H x 45.75"W x 29.5"D



Usable Interior Dimensions
45"H x 33.5"W x 24.5"D

Two Cart Heights | Four Custom Configured Shelf Interiors | No Tools Required for Adjustment

800.393.6090 | www.dsidirect.com | www.no-tear.com

23201 Antonio Parkway Rancho Santa Margarita, CA 92688



TRITON CASE CARTS™



Modular Shelving Options

Standard



CTS/OS



Hybrid



CTS



Two Cart Heights | Four Custom Configured Shelf Interiors | No Tools Required for Adjustment

800.393.6090 | www.dsidirect.com | www.no-tear.com

23201 Antonio Parkway Rancho Santa Margarita, CA 92688



TRITON CASE CARTS™

Photo Gallery





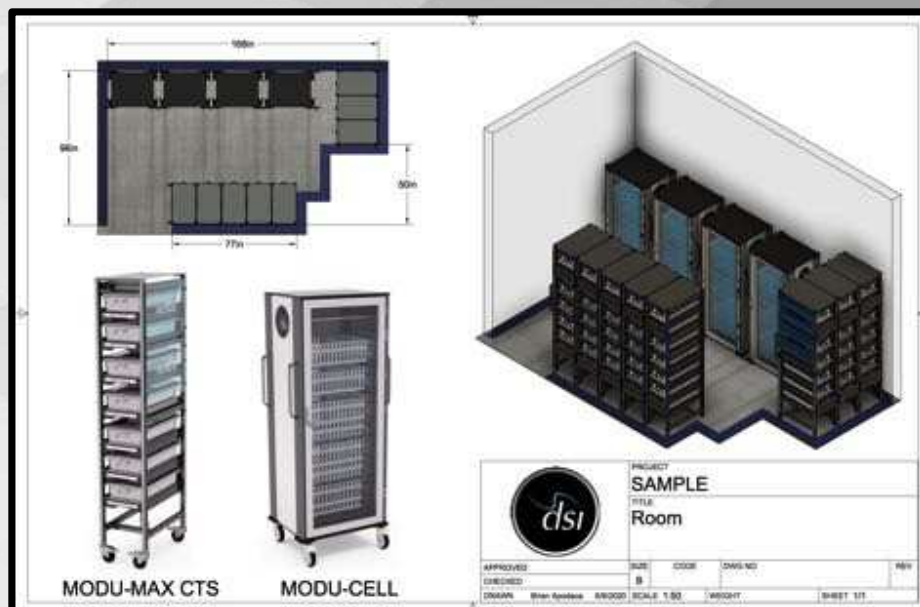
TRITON CASE CARTS™

Photo Gallery



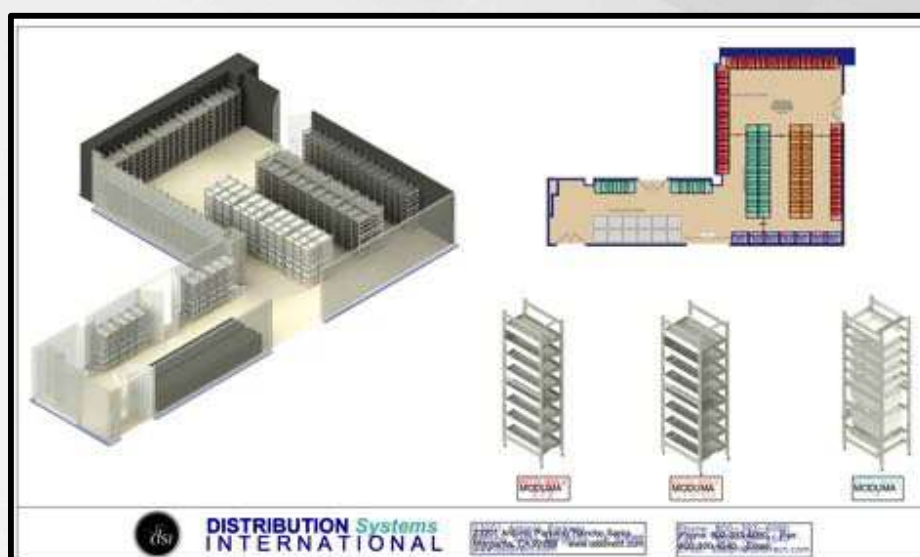


3D AutoCAD layouts at no cost.
Give us a call for a free onsite SPACE assessment and WORK FLOW evaluation.



Have you heard of DSI's NO-TEAR™ storage system?

www.No-Tear.com



23201 Antonio Parkway Rancho Santa Margarita, CA 92688

INVENTORY MANAGEMENT SYSTEMS. BUILDING STORAGE AROUND YOUR SUPPLY CHAIN.